

thefts in 24 hrs despite
extra vigilance across city



Burglars target four flats
hsg society in Kalyanina

Decamp With
Cash & Silver

THEY KNEW ABOUT THE LOCK

arrest gang of five
d of 50 burglaric

घुसकर की चोरी

फ्लॉय उठा कर चोरी
की दीवार के रास्ते
धुमे और अलमिग तोड़कर जस्ती
कामजात, दस्तावेज, नकदी 10
हजार रुपए, मोटरसाइकिल
सम्रा

robbery at Arera Colony home
5L worth of jewellery stolen



Correspondent

pal: Burglars targeted the
se of a consultant working
h Shyama Prasad Mukherji
n Mission (SPMRM) of Pan
yat and Rural Development
Pradesh

am, followed by his wife around 11
am. He returned home
camera in the block where the in-
cident took place. "We are obtain-
ing footage of CCTV cam-

IS YOUR
**EXISTING
LOCK
REALLY
SAFE** ?

Kur Apartments, said the burglars had
broken the lock of the house while she

आस महिन्यांत ५० घ

- बापे जेवद ; ८२ लाखवा
- पोलीस ठेका जत
- बापे जेवद ; ८२ लाखवा
- पोलीस ठेका जत

Cash, jewelle
from contra

the theft took place
side an hour when
and gone to a bank

ere. Tishma
bread d
s likely
g had
auto-
re-
port
e said

New Delhi: Cas
ley worth almo
were stolen fro
MLA Wardana
house in Sha
Tuesday night
this, the crook
with d

पुलिसकर्मी
तीन घरों

पक घर की खिड़की ते
भाकर संवाददाता

ग्राम सोनी में बदमाशों ने प
के घरों को निशाना बनाय
जानका

Find out today, compare it with...

EUROPA®

ANTI-THEFT ENGINEERING



Dr. P. A. Joshi,
Chairman

who believes in disruptive innovation and continual development.

The EUROPA journey began in the year 1984 with the Mission 'Anti-Theft Engineering', Dr. P. A. Joshi after studying in Germany, founded this Company in Cultural and Industrial city of Pune. Since then, **Welmade Locking Systems Private Limited** has carved for itself an enviable niche in Indian Market

We constantly INNOVATE to design and manufacture locks with best-in-class features meeting Global functions, finish, load (strength) & life (warranty) standards.

The Europa Edge

More than 40 years of excellence with single point ownership of the complete process (Research & Development, Design, Manufacturing, Marketing, Sales & Service) to ensure and to end to end ANTI-THEFT locking solutions for our customers. On a mission of preventing theft across country and make India theft free, safe and secure place to live in and providing ultimate Peace of Mind.

 100+ IP Registrations & Applications (Patent, Design, Etc).	 500+ theft site visits & 1000+ ANTI-THEFT trials for "ANTI-THEFT ENGINEERING" expertise.
 Every product goes through more than 50+ ANTI-THEFT tests in a controlled set up on actual doors during development.	 Experience of 5 million installations through 200+ trained technicians across India.

25 million+ homes secured	5 million+ installations	200K+ sqft manufacturing units	
200+ Service Technicians	200+ cities Sales & Service Network	40+ years of experience	100+ local stock points

Leading the mission of a
THEFT-FREE NATION

through ...

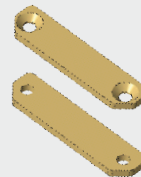


Anti-Break Armoured Plate



Enhances the **Strength of Main Door** against crow bar attack by thief

Anti-Theft Strengthening Plate



Enhances the **strength of wooden door frame** to prevent theft.

Thicker "ANTI TEAR" Receptacle



Enhances breaking load to **prevent breakage** in hard attempts by thief

Thicker "ANTI BEND" Cover Ring



For extra strength of lock cylinder, gives **strong & aesthetic look** to the door as well as lock

"ANTI RIP" SCREWS



Specially designed heavy duty "ANTI RIP" SCREWS to **enhance strength of the plate**

Strengthening Sandwich Plate

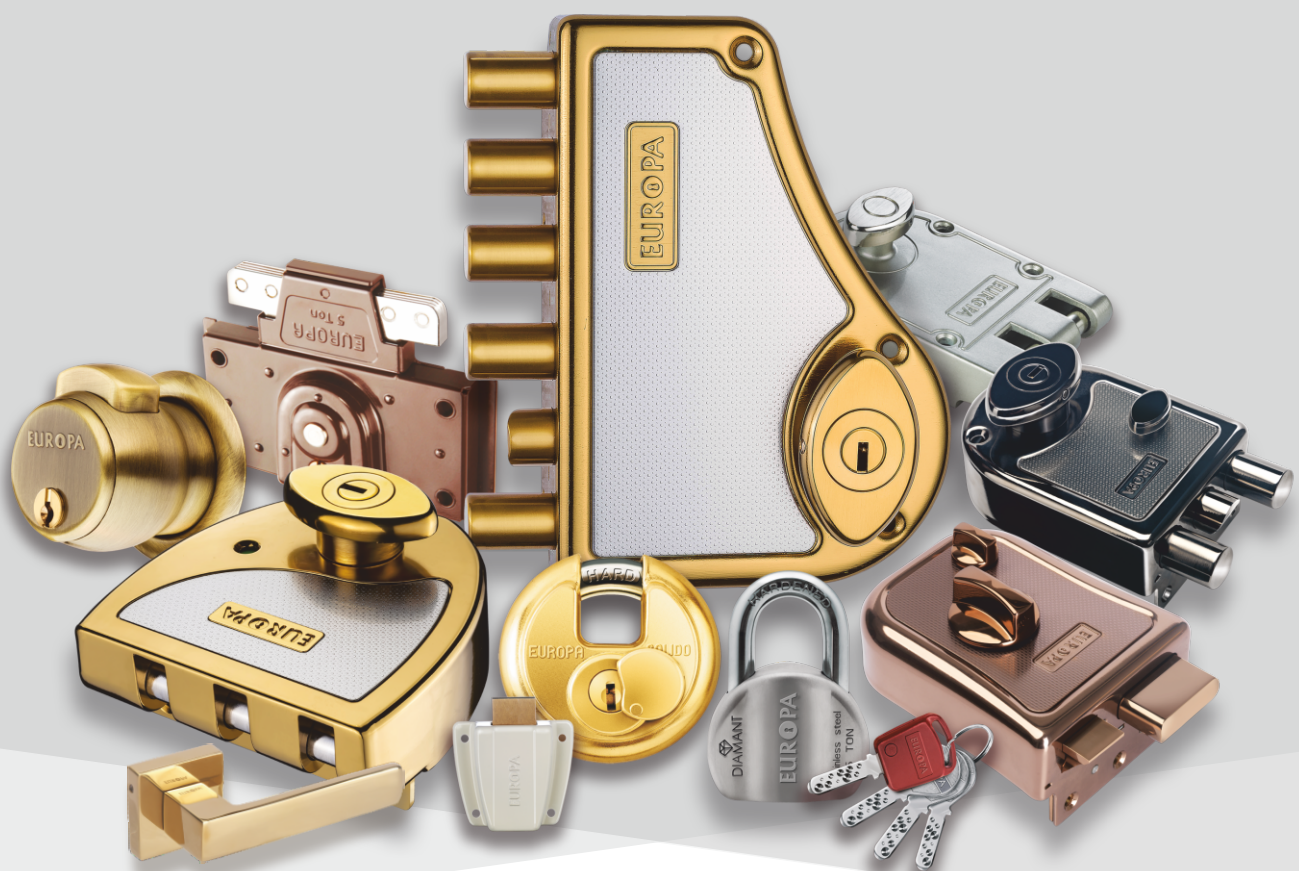


Strengthening Sandwich Plate for lock body and receptacle for enhanced **strength of the lock.**



Note : Applicable for selected locks only

PRODUCTS & SOLUTIONS



**Main Door Locks
Internal Door Locks
Furniture Locks
Commercial Locks
Mortise Locks
Accessories
Key Management Solution**

Main Door Locks

HEXABOLT[®]
6 TIMES STRONGER



PRO

ARMoured MAIN DOOR LOCK
5 TIMES SAFER



**MAIN
DOOR
LOCK**



PROTEKTU

THE ANTI THEFT SOLUTION



PARMA[®]
SHIELD YOUR HOME
INTERLOCKING MAIN DOOR LOCK



NEXEN

NEXT-GEN
ARMoured NIGHTLATCH



EUROPA[®]
DIMPLE KEY
Night Latch



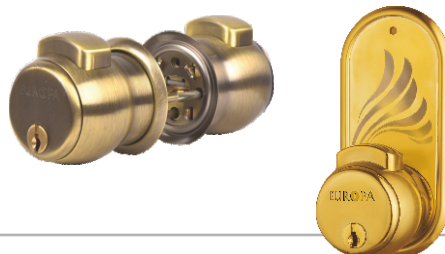
**JEMMY
PROF**
MAIN DOOR LOCK



Internal Door Locks

EUROPA[®]
Feather Touch
PRESS BUTTON CYLINDRICAL LOCK
WITH DIMPLE KEYS

Easy to open **smart** door lock
Convenience at your fingertips!



roundlock
HEAVY DUTY DESIGN



Furniture Door Locks

FURNITO[™]
SLIDING WARDROBE LOCK



FURNITO[®]
DRAWER & CUPBOARD LOCK
MULTIPURPOSE LOCK

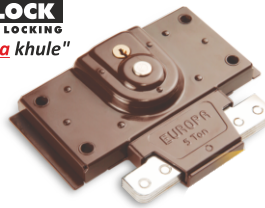


Commercial Locks

DIAMANT[™]
PADLOCK
WITH DIMPLE KEY



EUROPA[®]
CENTRE
SHUTTER LOCK
ARMoured - 2 WAY LOCKING
"Jack se bhee na khule"



JUMBO
5 TON
SOLIDO
3 TON



Mortise Locks

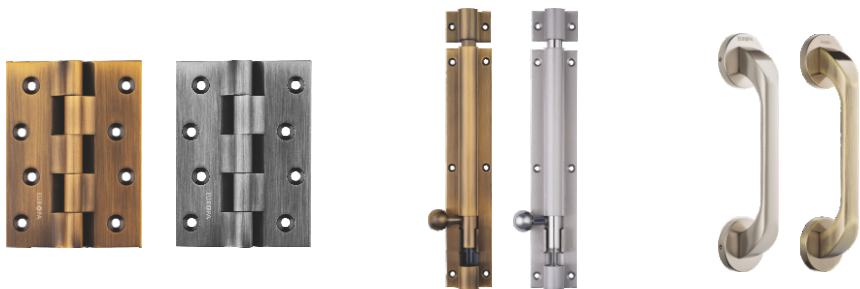
MORTISE
ROSE HANDLE

EPSILON[®]
SMOOTH & SECURE
MORTISE CYLINDER



Accessories

EUROPA[®]
ANTI-THEFT ENGINEERING
accessories



Key Management Solution



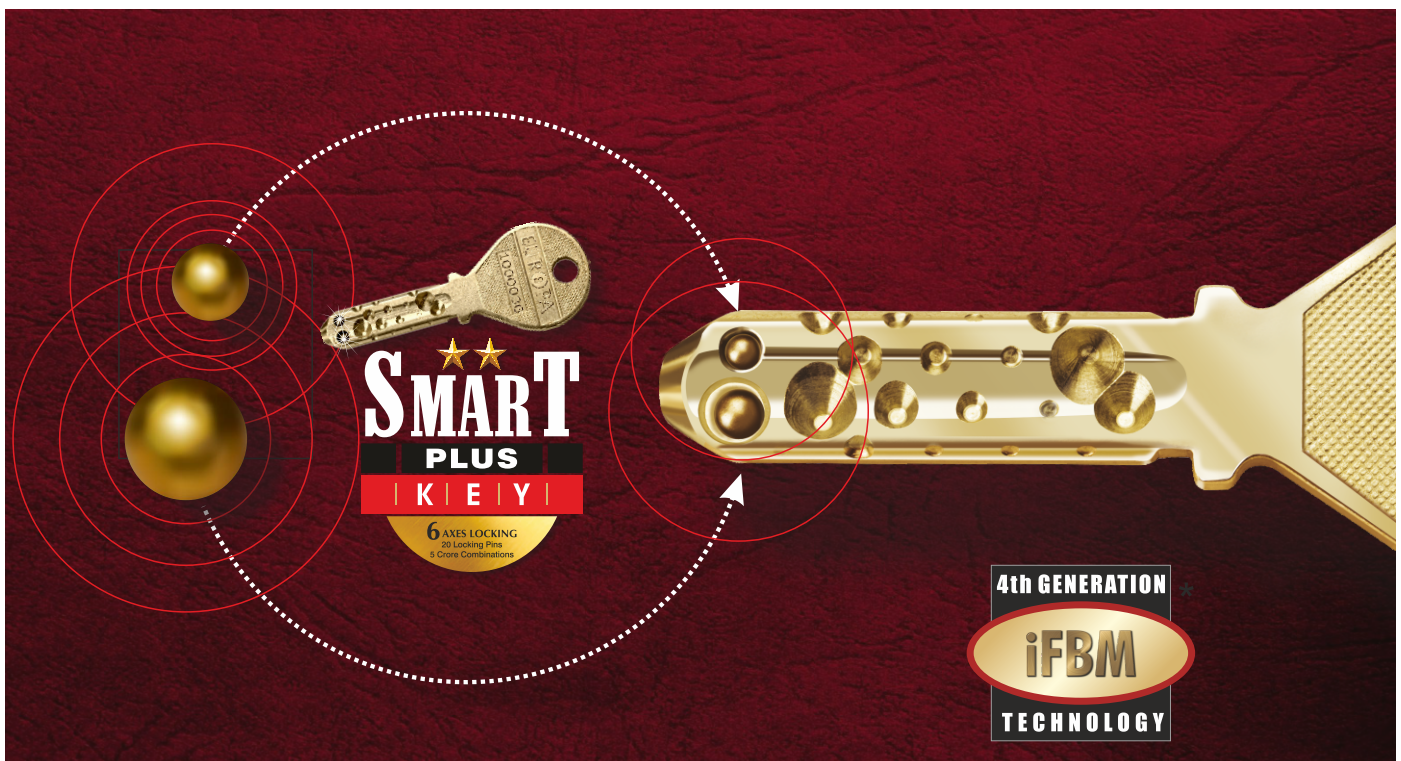
CUSTOMISED MK
(MASTER KEY)



CUSTOMISED CK
(COMMON KEY)



ACCESS CONTROL SYSTEM
(ACS)



Bigger & thicker key with extended length; high precision machining with micron accuracy; to eliminate duplication. An ordinary identical dimple key without these floating balls can not open this lock

Precision machined lock assembly with 20 locking pins made with Swiss machine, and the presence of 2 FLOATING BALLS creates an "Interlocking Mechanism", which provides an extremely high level of security.

- 6 AXES LOCKING
- 20 LOCKING PINS
- 5 CRORE COMBINATIONS

New Launch



LATCH MODEL

DEAD-BOLT MODEL

EUROPA®

ANTI-THEFT ENGINEERING

NEXEN®

NEXT-GEN
ARMOURED NIGHTLATCH



1st Time in INDIA
EUROPA
Presents
FREE ANTI-BURGLARY INSURANCE
Worth Rs 1 Lakh

*Conditions apply

LATCH MODEL

DEAD-BOLT MODEL



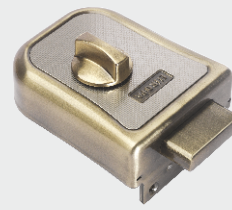
RG : Rose Gold



SN : Satin Nickel



GL : Gold



AB : Antique Brass



GB : Gun Black

LOCK FEATURES

- Reversible LATCH BOLT, common for both inside & outside opening doors
 - Door HOLD-BACK button to prevent unforeseen door closing
 - Designed 3D Duo-Tone Plate
 - Concealed mounting of lock for aesthetics

ALSO AVAILABLE DIMPLE KEY MODEL

Finish : AB & SN



Latch Model

Dead-Bolt Model

SMART KEY PATENT
268561

PATENT APPLIED
FOR LATCH LOCK

DESIGN REGISTERED
FOR LOCK - 343364 / 371321

DESIGN REGISTERED
FOR LIGHT KEY - 257169



SCAN FOR MORE INFO

- Specifications may change in view of continuous innovations.
- Product images shown are for presentation purpose, actual product may vary.
- Imitation of Label Graphics is a punishable offence.

• *FFS available at selected serviceable area • FFS not applicable for purchased through e-commerce platforms.



Developed, Manufactured & Marketed by :
**WELMADE LOCKING SYSTEMS
PRIVATE LIMITED**

Corporate Office :
J-61, MIDC, Bhosari, Pune - 411 026. Maharashtra (India)
Tel. : 020 - 2712 2546 / 2468 / 1857 | Toll Free No. : 1800123061061
E-mail : service@europalocks.com, marketing@europalocks.com
www.europalocks.com